

Cabinet and Corporate Management Team

Portfolio Holder Briefing Report

**December 2025
(For performance in August, September
and October 2025)**

Cabinet Members



Cllr Chris Boden
Leader of the Council
& Portfolio Holder for
Finance, Governance &
Business Rates



Cllr Jan French
Deputy Leader of the
Council, Portfolio Holder for
ARP, Car Parks, Parking
Decriminalisation and Parks
& Open Spaces



Cllr Gary Christy
Portfolio Holder for Housing,
Licensing & Environmental
Health Enforcement, Port,
SHA, Transport and Yacht
Harbour



Cllr Steve Count
Portfolio Holder for
Economic Growth, Land
Charges and Fenland
Inspire! Leisure Centre
Projects



Cllr Sam Hoy
Portfolio Holder for Culture,
Housing, Licensing and
Wisbech Town Board



Cllr Sidney Imafidon
Portfolio Holder Assets,
Business Premises, Health
& Safety and Food Safety,
Environmental Services and
Heritage



Cllr Dee Laws
Portfolio Holder for
Building Control, Flooding,
IDBs and Planning



Cllr Chris Seaton
Portfolio Holder for Funfairs,
Fenland Inspire! Projects,
Markets and Wisbech High
Street Projects



Cllr Steve Tierney
Portfolio Holder for
Communications,
Decarbonisation, ICT,
Streetsweeping, Street Bins
& Dog Bins and Recycling &
Refuse Collection



Cllr Susan Wallwork
Portfolio Holder for
Cemeteries, Community,
Safety, Emergency
Planning, Freedom
Leisure, Military Covenant,
Policing, Street Pride,
Street Naming &
Numbering and Travellers
Sites

Support Vulnerable Members of Our Community

Enable residents to claim the Council Tax Support and Housing Benefit they are entitled to (Cllr French)

Welfare Reform was introduced by Government in 2012 as part of wider fiscal measures to reduce deficits, with the intention to encourage work whilst reducing welfare expenditure. As the migration of claimants from legacy benefits to Universal Credit nears completion, the DWP issued all Migration Notices by the end of September. 95% of total claimants have so far claimed Universal Credit.

The DWP has invested up to £15 million nationally in Help to Claim to support the most vulnerable customers move to UC. This enhanced support journey includes outbound calls, visits, and the new complex case coach role.

The spending review announced that £842 million has been made available for a Crisis Resilience Fund (CRF). This is a multi-year settlement and replaces the current Household Support Fund (HSF) and Discretionary Housing Payments (DHPs). The aim is to provide longer-term funding which will enable LAs to take a more preventative approach and plan more effectively to support communities.

The DWP is committed to working in partnership with Local Authorities to co-design the Crisis Resilience Fund, and Anglia Revenues Partnership was represented on the working group which is helping to shape the scheme and feed into how the fund will be implemented.

Taking the feedback from the working group into account, the DWP has now confirmed that they intend to take a phased approach to integrating Discretionary Housing Payments within the Crisis Resilience Fund. This means that funding allocations for housing support will be maintained and provided to the current Local Authority recipient until March 2028.

2025/26 – To end of Quarter 2

	2025/26	
	TARGET	CUMULATIVE PERFORMANCE
Council Tax Support	9	9
Housing Benefit	8	10.23

As we move through Quarter 3, we expect to see an improvement in Housing Benefit processing performance due to a focus on new claims

Recent press release:

[**£1.5 million in incorrectly claimed Council Tax support and discounts being recovered - Fenland District Council**](#)

Use our housing powers to improve the condition of private rented homes (Cllr Christy)

Town	HMOs investigated	Other Homes investigated
Wisbech	16	48
March	0	18
Chatteris	4	3
Whittlesey	1	6
Villages	0	8

Total homes investigated is 104 - This is in line with the profile of interventions that are undertaken each year to the target of 250.

VILLAGE BREAKDOWN

Benwick = 0	Elm = 0	Manea = 0	Thorney Toll = 0
Coates = 1	Fridaybridge = 1	Murrow = 0	Tydd = 0
Coldham = 1	Foul Anchor = 0	Newton = 0	Turves = 0
Christchurch = 2	Gorefield = 0	Parson Drove = 1	Wimblington = 0
Doddington = 0	Guyhirn = 1	Stonea = 0	Wisbech St Mary = 0
Eastrea = 0	Leverington = 1	Throckenholt = 0	

Use our housing powers to prevent homelessness and reduce rough sleeping (Cllr Hoy)

Housing Issues successfully addressed by Housing Options Team for households.

	Up to 01/11/25 for 2025/26
Prevention Stage	51
Relief Stage	81
Total number of households	132

	Up to 01/11/25 for 2025/26	Up to 01/11/24 for 2024/25	% change
Number of households seeking advice (homeless presentations)	1010	1183	-14.6%

The proportion of households presenting to the Council as homeless whose housing circumstances were resolved through Housing Options work for the year = 45% (132 preventions divided by 294 households where duties were owed).

Rough Sleeper Prevention and Recovery Grant (RSPARG) work from 01/04/25 to 01/11/25 2025/26

Circumstances	Number of people
Rough Sleeping	15
Successfully moved on	20
Lost contact with services	20 but no longer rough sleeping
Between rough sleeping & sofa surfing	3
Alternative outcome	2
Placed in off the street accommodation awaiting	4

move on	
TOTAL	64

Reduce emergency accommodation use to provide better quality and more cost-effective short-term accommodation and supported homes for homeless clients (Cllr Hoy)

Please see [Progress Against the Communities Priorities](#) update report tabled at Overview & Scrutiny Committee on 01.12.25.

Use our housing powers to meet housing needs, including bringing empty homes back into use (Cllr Christy)

Table 1 - Represents the total number of properties brought back into use through officer involvement.

From 1 April 2025 to 31 March 2026

	LTE 6-11MTHS	LTEP 12MTHS +
Total Officer involvement	8	27
Total for the period	1.4.24 – 31.3.25	35

Table 2 - Represents the number of properties brought back into use for the New Homes Bonus

From 7 October 2025 to 5 October 2026 (CTB1 submission date)

	LTE 6-11MTHS	LTEP 12MTHS+
Total Officer Involvement	1	8
Total for the period	7.10.25 - 5.10.26	9

Support residents to manage the effects of the cost of living (Cllr Boden) - AG

As part of our ongoing Cost of Living support work, a community event was held at Whittlesey Library on Friday 7 November, alongside another local engagement activity. The event brought together a range of partners, including Age UK, Know Your Neighbourhood project, Libraries, Work Well, Anglian Water, Social Prescribers, How Are You? Fenland, Citizens Advice Rural Cambs and the Armed Forces Covenant Officer.

Over the two-hour session, 45 residents attended to access vital services, seek advice, and discuss various aspects of their lives. The event provided valuable opportunities for early intervention and community connection, demonstrating the positive impact of partnership working in supporting residents through the ongoing cost of living challenges.

Website link: [Cost of living support in Fenland - Fenland District Council](#)

Encourage partners to support the delivery of the Golden Age programme and support older people (Cllr Wallwork)

Recent press releases:

[Over 60s invited to free festive event - Fenland District Council](#)

[Gift collection for older people this Christmas - Fenland District Council](#)

[Over 60s invited to free event - Fenland District Council](#)

Website link: [Golden Age - Fenland District Council](#)

Promote Health & Wellbeing for all

Create healthier communities through activities developed and delivered by Active Fenland and Freedom Leisure (Cllr Wallwork)

Recent press releases:

[Free and low-cost exercise and activity sessions - November 2025 - Fenland District Council](#)

[Free and low-cost exercise and activity sessions - September 2025 - Fenland District Council](#)

Website link: [Our Partnerships | Freedom Leisure](#)

Work with partners to deliver the Early Help Hub, providing a 'one stop shop' of support and advice to individuals and families in their times of need (Cllr Wallwork)

Recent press releases:

[First anniversary of get well for work free support programme - Fenland District Council](#)

Website link: [WorkWell Fenland - Fenland District Council](#)

An additional 110 participants joined the WorkWell programme, August – October 2025, bringing the total to 511 since Go Live in November 2025.

62% of referrals that are received join the programme

To date Coaches have made over 240 referrals, 130 signposts to 91 different service providers.

Work with partners to keep people safe in their neighbourhoods by reducing crime and anti-social behaviour and promoting social cohesion

Manage the Fenland Community Safety Partnership to reduce crime and anti-social behaviour (Cllr Wallwork) – DH **additional text by exception**

Recent press releases:

[Businesses and organisations invited to join fight against hate crime - Fenland District Council](#)

[Community Safety Partnership \(CSP\) - Fenland District Council](#)

[Hundreds of children learn vital skills at Safety Zone events in Fenland - Fenland District Council](#)

Support the Fenland Diverse Communities Forum to deliver the Fenland-wide Community Cohesion Action Plan (Cllr Wallwork)

Please see [Progress Against the Communities Priorities](#) update report tabled at Overview & Scrutiny Committee on 01.12.25.

Deliver the Community Safety Grant Agreement with the Police and Crime Commissioner (Cllr Wallwork)

Please see [Progress Against the Communities Priorities](#) update report tabled at Overview & Scrutiny Committee on 01.12.25.

Deliver the CCTV shared service with Peterborough City Council (Cllr Wallwork)

Please see [Progress Against the Communities Priorities](#) update report tabled at Overview & Scrutiny Committee on 01.12.25.

Website link: [CCTV - Fenland District Council](#)

Street Drinking Update (Cllr Wallwork)

Please see [Progress Against the Communities Priorities](#) update report tabled at Overview & Scrutiny Committee on 01.12.25.

Licensing Update (Cllr Christy & Cllr Hoy)

Website link: [Licensing - Fenland District Council](#)

Work with partners to promote Fenland through Culture & Heritage

Provide proportionate support and advice for community groups to hold safe and successful public events (Cllr Seaton)

Recent press releases:

[Funfairs coming to Fenland - Spring 2026 - Fenland District Council](#)

[Fun at Whittlesey Festival 2025 - Fenland District Council](#)

[Funfairs coming to Fenland - Sept/Oct 2025 - Fenland District Council](#)

[Summer events coming to March Market Place this August - Fenland District Council](#)

Key PIs:

Key PI	Description	Baseline	Target 2025/26	Cumulative Performance	Variance (RAG)
ARP1	Days taken to process new claims and changes for Council Tax Support	9.4 days	7.0 days	10.69	
ARP2	Days taken to process new claims and changes for Housing Benefit	8.36 days	7.00 days	11.69	
CELP1	Total number of private rented homes where positive action has been taken to address safety issues	286	250	104	
CELP2	The proportion (%) of households presenting to the Council as homeless whose housing circumstances were resolved through Housing options work	46%	52%	45	
CELP3	Number of empty properties brought back into use	64	50	35	
CELP4	Total number of Active Fenland sessions offered per year (to October 2025 in current year – 50% of previous performance)	1463	750	746	
CELP5	Customer satisfaction with our leisure centres (Net Promoter Score)	17	25	N/A (March 2026)	N/A
CELP6	Value of Arts Council Grants achieved in Fenland	£450,000	£75,000	N/A (March 2026)	N/A

Key:	
	Within 5% of target
	5-10% below target
	10% or more below target

Comments

Deliver a high performing refuse, recycling and street cleansing service

Work with partners, businesses, the community and volunteers to maximise the quality and quantity of recycling collected (Cllr Tierney)

Recycling will generate more than £2m of income to support service delivery this year. Despite this, Fenland's customers are recycling less of their waste. Since the highs of the pandemic, recycling in Fenland has reduced 17% compared to 2.4% nationally. There are economic and other reasons for this greater impact locally.

As a result, Cllr Tierney has asked that recycling education overall forms a large part of the communications associated with the launch of the food waste service starting next year.

Cabinet agenda item 15.09.25: Refuse, Recycling and Cleansing HGV Fleet Replacement
[Agenda for Cabinet on Monday, 15th September, 2025, 2.00 pm - Fenland District Council](#)

Council agenda item 15.09.25: Refuse, Recycling and Cleansing HGV Fleet Replacement
[Agenda for Council on Monday, 15th September, 2025, 4.00 pm - Fenland District Council](#)

Deliver an effective, self-funding Garden Waste collection service (Cllr Tierney)

The garden waste service has had another successful year with a total income of £1,191,000 from the 24,600 customers who chose to subscribe in 2025/26. The subscriptions for 2026/27 go on sale in the new year.

Website link: [Garden Waste Service \(Brown Bin\) - Fenland District Council](#)

Deliver clean streets and public spaces as set out in the national code of practice (Cllr Tierney)

Fenland's small street cleansing team work hard to keep the area as clean as possible. Customers have reported 997 issues such as litter, flytipping or graffiti to them since April. The team responded to these requests the same or next day 90% of the time (893) so far this year.

Service quality inspections, performed by Street Scene officers, have shown that key streets and public open spaces meet the required standard of cleanliness 97.5% of the time; 355 inspections were of an acceptable standard from the 364 performed.

Work with key stakeholders to deliver an effective waste partnership and update the Cambridgeshire and Peterborough Waste Strategy (Cllr Tierney)

The updated waste strategy for Cambridgeshire and Peterborough is ready for public consultation via the County Council's website. This is an 8-week consultation period, and the results will be brought back to members in 2026.

In cooperation with Cambridgeshire and Peterborough Waste Partnership, to plan and deliver the Environment Act 2021 changes to domestic and commercial waste collection through an updated Waste Strategy (Cllr Tierney)

Fenland's communications campaign has commenced for the food waste service that will begin in summer 2026.

Recent press release:

[Free, weekly food waste collections coming to Fenland in 2026 - Fenland District Council](#)

Getting it Sorted Recycling Champions (Cllr Tierney)

Following the relaunch of the champions, volunteers are being recruited to help the Fenland community to increase community resilience and recycle more.

Website link: [Getting it Sorted - Volunteer \(casual basis\) - Fenland District Council](#)

Deliver a competitive trade waste service (Cllr Tierney)

The service has 600 small to medium sized businesses, supporting them with their waste, recycling and food waste services.

Website link: [Trade Waste and Recycling Service - Fenland District Council](#)

Work with partners and the community on projects to improve the environment and streetscene

Use education, guidance and Council powers to fairly enforce environmental standards and tackle issues such as fly-tipping, abandoned vehicles, dog fouling, littering and antisocial behaviour (Cllr Imafidon)

Fly tipping continues to be a priority for our communities and streetscene officers work proactively to investigate reported fly tipping, working closely with colleagues and other agencies to ensure swift removal of fly tipping, particularly where this presents a hazard, and to try and ascertain who is responsible.

During this time the Council has removed 290 fly tips. The main locations affected have been Wisbech and its surrounding villages.

Month	Total	Chatteris	March	Whittlesey	Wisbech	Villages
August	71	4	12	4	33	18
Sept	101	11	13	9	41	27
October	118	8	22	6	46	36
Total	290	23	47	19	120	81

The most commonly tipped items are household related, such as DIY waste and rubbish and bulky items. We have attended 103 of these incidents, looking through the waste searching for any evidence. This has resulted in the following enforcement actions:

- 5 x £600 Fixed Penalty Notices have been issued to individuals we believe have either been responsible for fly tipping or those who have failed to employ the services of legitimate waste carriers (resulting in waste being dumped).
- A further 2 formal written warnings for fly tipping offences where the level of evidence was not sufficient to prosecute.
- 12 formal interviews under caution have been carried out with those we suspect are linked to fly tipped instances.
- 2 individuals have failed to attend Peterborough Magistrates Court for scheduled plea

hearings following the non-payment of Fixed Penalty Notices. These were issued to householders who failed to dispose of their waste legally, which resulted in it being fly tipped in Wisbech. Because of failing to attend Court, a warrant was issued by the judge.

Intervention work has continued with visits to address locations where bulky items are left outside properties or in community areas where there are issues with refuse.

Illegal Parking (March Market) and Abandoned/Nuisance vehicles

Due to a Civil Parking Order on March Market Place, the Council is able to issue parking charge notices to vehicles found in breach. During this time:

- We have issued 3 parking fines to drivers who have parked on a market day inconveniencing our traders.
- A total of 108 vehicles has been reported as abandoned. All were investigated and only 7 were deemed abandoned and later removed by our contractor (4 of which were burnt out).
- We have also received a further 36 reports of nuisance parking which have been referred to the Police.
- We have also been accepted by the DVLA to have direct access to registered keepers' details for enforcing our statutory duties. Connection will be accessed within the next couple of months subject to testing.

Ensure well maintained parks and open spaces by working with our grounds maintenance contractor (Cllr French)

Website link: [Parks - Fenland District Council](#)

Supporting volunteer Street Pride groups and other environmental volunteers, organisations and partners (Cllr Wallwork)

Website link: [Street Pride - Fenland District Council](#)

Work with Town Councils and the community to provide local markets and thriving market town community events (Cllr Seaton)

Recent press releases:

[Don't miss free March and Wisbech Christmas events - Fenland District Council](#)

Deliver the council's carbon reduction and climate adaptation plan including meeting all climate change targets which are legally required by the UK Government (Cllr Tierney)

The Net Zero Village Fund has been fully allocated with £85,000 being allocated to 5 community projects which will save energy costs for those community groups. Further information will be published once the schemes are completed.

Review the current arrangements for parking enforcement in Fenland (Cllr French)

The last [update report on CPE](#) (civil parking enforcement) was tabled at Cabinet on 21 July. The implementation costs were calculated using uplifted costs from the November 2023 report for the poor sign and line defects and a provisional sum included for the fair defects.

Formal quotes have since been requested from Cambridgeshire County Councils framework contractor (Milestone) and these are expected to be available by the end of January. Upon receipt of the updated corrective sign and line costs, a further report will be brought back to Cabinet in February for final approval.

The sign and line defect quantities will still be calculated using data from the 2021 survey results but will include both the poor and fair defects with a contingency allowance added for annual deterioration. Whilst the updated implementation costs will still be estimated, the corrective works costs will reflect the most accurate figures without having to resurvey.

A change request form has been submitted to and considered by the CPCA to further extend the CPE funding contribution. It is understood that the CPCA's offer to extend the funding drawdown deadline will be conditional on FDC's decision to fund the CPE budget shortfall.

The project delivery timeline is still estimated to be 2 years from approval with the earliest CPE go live date to be the end of 2027.

Street Lighting (Cllr French)

A total of 48 streetlight faults were reported and have been attended to during the months of August, September and October 2025 by Fenlands streetlight maintenance contractor. Sixteen of the reported faults related to District Council streetlights during this period.

An overview of the fault attendance can be seen below. These figures exclude any capital-programmed replacement or upgrade works undertaken by the Councils' streetlight contractor (Woodstock Streetlighting Services Ltd).

Fenland DC -	16 Fault Reports
Clarion -	5 Fault Reports
Parishes -	27 Fault Reports

The electrical and structural testing works have now been completed. Some district lighting assets were unable to be tested due to power supply faults or were found to have below ground water ingress. These have been made safe and will be added to the future replacement and upgrade works programme.

23 streetlights failed the structural test and have been stumped to make safe. Some streetlights have already been replaced or the works orders placed for replacement. Others are awaiting consent from third party asset owners. A number of test certificates are still awaited along with the updated inventory data from FDC's streetlight contractor. Upon receipt the data will be shared with third party asset owners.

FDC Car Park Maintenance (Cllr French)

Car park inspections are undertaken 6 monthly and were last carried out in October. The associated defects have since been quantified and quotations are being sought for any programmed works. The inspection information is also used to inform minor improvement, and maintenance works for all the Councils public car parks.

The following works have either been identified or programmed.

1. Patching works to various FDC public car parks.
2. Vegetation and Tree trimming to specific sites
3. Road marking works at specific sites

The Engineering Team are responsible for around 6500 highway related assets. The majority

of these assets are either streetlights or street name plates but also include street furniture items such as seats, bus shelters, gateway signs, finger arm signs and bollards.

Routine inspections for the high-risk assets are undertaken each year and various maintenance, and improvement works carried out to ensure that the assets remain safe and fit for purpose. Each year a number of seats, street name plates, streetlights and bus shelters are replaced or upgraded for safety reasons and to enhance the streetscene.

Key PIs:

Key PI	Description	Baseline	Target 25/26	Cumulative Performance	Variance (RAG)
CELP7	% of Rapid or Village Response requests actioned the same or next day	87%	90%	90%	
CELP8	% of inspected streets meeting our cleansing standards	99%	90%	97.5%	
CELP9	% of household waste recycled through the blue bin service (1 month in arrears)	25.0%	25.0%	23.1% (to Sep 2025)	
CELP10	Customer satisfaction with refuse and recycling services	97%	90%	N/A (March 2026)	N/A
CELP11	Customer satisfaction with garden waste service	97%	90%	N/A (March 2026)	N/A
CELP12	Number of Street Pride, In Bloom, Friends Of Groups and Green Dog Walkers community environmental events supported	282	204	199	
CELP13	% of those asked who were satisfied with community events	100%	96%	97%	

Key:	
	Within 5% of target
	5-10% below target
	10% or more below target

Comments
CELP9: Fenland recycling tonnages have reduced.

Economy

Attract new businesses, jobs and opportunities whilst supporting our existing businesses

Promote and develop our Business Premises at South Fens, The Boathouse and Light Industrial Estates to encourage investment, business development, job creation and skills diversification (Cllr Count)

	South Fens Business centre	South Fens Enterprise Park	Boat House	Manufacturing Estate	Actual
Occupancy %	71.9	100	95.6	100	95.0

Promote and enable housing growth, economic growth and regeneration

Enable appropriate growth, development and infrastructure through delivering a proactive and effective Planning service (Cllr Laws)

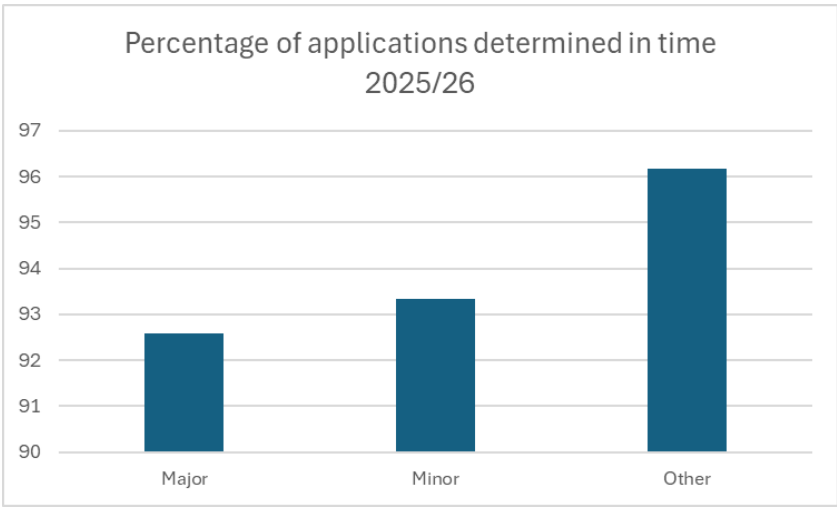
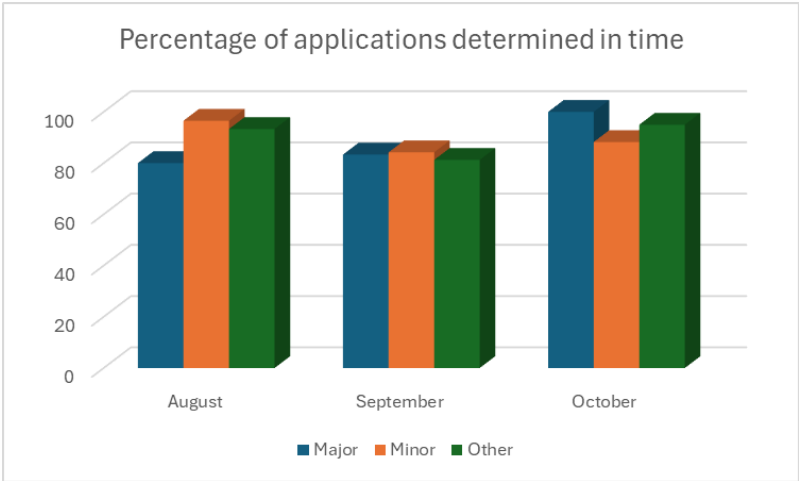
Following the successful recruitment to all key vacancies, including the Development Management Team and the Enforcement Team leadership, the service is now operating with a stable, permanent workforce. This has enabled the reduction of historic application backlogs and improved responsiveness to new planning submissions. This has also enabled the Council to agree a number of Planning Performance Agreements for larger or more complex applications. The fees associated with these agreements seek to allow for a greater level of engagement, amendments and discussions during the lifetime of an application without impacting the core budget or passing additional cost on to the Taxpayer.

The ongoing challenge regarding delegated authority continues to contribute to pressure on committee workloads, leading to longer agendas and additional meetings. This not only affects the efficiency of the Planning Service but also impacts the experience for applicants and members alike. However, the forthcoming introduction of the National Scheme of Delegation is expected to bring significant change by increasing the proportion of applications determined by officers, reducing the burden on Planning Committees and enabling a more streamlined, responsive decision-making process.

The Planning Service has invested additional resources and support into the Enforcement Team, which has resulted in a noticeable increase in the number of cases closed. This enhanced capacity has also allowed the team to make significant progress on a number of more high-profile and complex enforcement cases, with several now approaching the stage of formal notice service. It is important to highlight that both last year and this year the Enforcement Team has experienced a substantial increase in case volumes compared to

previous years, where caseloads had remained relatively stable. Despite this rise, the team’s strengthened approach has ensured continued effective management and resolution of enforcement matters.

The Policy team remains actively engaged with Nationally Significant Infrastructure Projects (NSIPs), recognising the critical role these play in shaping the area’s future growth and connectivity. Increased collaboration with Elected Members is planned to ensure that planning policies reflect local aspirations and deliver sustainable, inclusive growth that benefits all parts of Fenland.



Council agenda item 07.09.25: Constitutional Amendments - Planning Scheme of Delegation
[Agenda for Council on Monday, 15th September, 2025, 4.00 pm - Fenland District Council](#)

Statutory Harbour Authority

The Nationally Significant Infrastructure Project - Grimsby to Walpole have expressed interest in understanding how the Ports on the River Nene could support the project with materials being transported by river under the Government’s Water Preferred Policy. It is early in these discussions however there is potential for additional income and possible strengthening of the Council owned suspended quay.

Work with our partners to enable new affordable housing to meet housing needs (Cllr

Laws & Cllr Hoy)

217 affordable homes are forecasted for completion in 2025/26 across key sites in March, Whittlesey, Elm, and Wimblington. A further 724 affordable homes are expected to begin construction during 2025/26, with completions anticipated within the next 18–36 months.

The Council's enabling work has supported a strong pipeline of over 1,000 affordable homes in early planning stages, many with planning permission granted. Developer and registered provider interest remains high, with regular engagement by the Council to encourage a focus in Fenland

Plan for Neighbourhoods, Wisbech (Cllr Hoy**March Future High Street Fund (Cllr Seaton & Cllr French)**

The demolition of the former Barclays Bank is well underway with progress taking place at a pace and completion expected in the coming weeks.

[New Year opening for March toilets - Fenland District Council](#)

[March town transformation continues - Fenland District Council](#)

24 High Street, Wisbech (Cllr Seaton, Cllr Boden, Cllr Hoy & Cllr Tierney)

Building works are completed. Minor Building Control issues being addressed with expected Practical Completion and possession of the building expected on 4 December.

The Elms, Chatteris (Cllr Boden, Cllr Count, Cllr Tierney)

Reserve Matters Application being determined.

Nene Waterfront Development (Cllr Boden, Cllr Count, Cllr Tierney)

Planning permission approved for 70 home extra care scheme.

Continue to review council land and property assets to ensure they are fit for purpose and optimised to deliver better public services, improve efficiency and release surplus land for residential and commercial development as outlined in our Commercial Investment Strategy (Cllr Boden, Cllr Count, Cllr Tierney & Cllr Imafidon)

Cabinet agenda item 15.09.25: Investment Board Update and Review of the Commercial and Investment Strategy

[Agenda for Cabinet on Monday, 15th September, 2025, 2.00 pm - Fenland District Council](#)

Fenland Inspire! (Cllr Seaton and Cllr Count)**Wisbech Splash Pad**

[New water features make a splash at Wisbech Park - Fenland District Council](#)

Manor Leisure Centre, Whittlesey

Recent press releases:

[Manor Leisure Centre Redevelopment: Drop-in engagement events in Whittlesey - Fenland District Council](#)

[Residents invited to shape the future of Manor Leisure Centre - Fenland District Council](#)

Chatteris Leisure Centre Condition Survey Work

Works will be completed in early December.

District Wide Assessment of New Play Equipment

Please refer to the December 2025 Cabinet report regarding the Pride in Place Impact Fund.

Wisbech Orchard Park

Following a discussion with the Wisbech Orchards lead, FDC will be working together with that project to remove and replant the Wisbech Park orchard trees by the end of January 2026.

New Village Green for Wimblington –

Transfer principles agreed with the Parish Council. S123 Notice have been published and subject to not object transfer can proceed. Solicitors instructed

3G Pitches

Planning permission has been granted for the Manor Field Playzone. A planning application has been submitted for the PlayZone at Barton Road.

St John's Chapel, Station Road, March

Discussions ongoing awaiting March Town Council who are presently considering their options

Civil Parking Enforcement

Please see [earlier update](#) in this report.

Promote and lobby for infrastructure improvements

Promote sustainable road, rail and concessionary transport initiatives to improve access to employment and local services (Cllr Christy)

Recent press releases:

[Share your views on using Whittlesea Railway Station to help unlock plans for future regeneration - Fenland District Council](#)

[Pupils celebrate rail heritage with new artwork at Fenland stations - Fenland District Council](#)

[All aboard! Travel Buddies project expands thanks to additional funding - Fenland District Council](#)

Work with the Combined Authority to influence how housing and infrastructure funding is used to stimulate housing development and economic growth and improve connectivity in the district (Cllr Christy, Cllr Hoy and Cllr Laws)

Recent CPCA report:

[Approval of Cambridgeshire and Peterborough Local Growth Plan.pdf](#)
[C220817 CPCA Prospectus](#)

Key PIs:

Key PI	Description	Baseline	Target 25/26	Cumulative Performance	Variance (RAG)
CELP14	% of major planning applications determined in 13 weeks	91%	85%	92.59%	
CELP15	% of minor planning applications determined in 8 weeks	85%	85%	93.33%	
CELP16	% of other planning applications determined in 8 weeks	91%	85%	96.18%	
EGA1	% occupancy of our business estates	94.2%	92.0%	95.1%	
MS1	% occupancy of Wisbech Yacht Harbour	85%	90%	91%	

Key:	
	Within 5% of target
	5-10% below target
	10% or more below target

Comments

Excellent Customer Service

Elections Update (Cllr Boden)

Recent press release:

[Thousands of Fenland postal voters need to reapply under new rules - Fenland District Council](#)

Recent election results:

[Declaration-of-Results-Whittlesey-North-West-Ward-of-Fenland-District-Council](#)
[Declaration-of-Results-North-West-Ward-of-Whittlesey-Town-Council](#)

3C's Update (Cllr Tierney)

Quarterly figures to be reported on, July, October, December and March

August - October 2025	Total received	On time	% On time
Correspondence			
	35	34	87%
Stage 1			
CELP	34	21	62%
GI	2	2	100%
PRCS	9	10	90%
Stage 2			
CELP	3	2	67%
GI	1	Open*	N/A
PRCS	0	0	N/A

*the response is due after this reporting period.

Governance, Financial Control & Risk Management

Maintain robust and effective financial standards, internal controls and organisational management (Cllr Boden)

Council agenda item 24.09.25: Audit and Risk Management Committee Annual Report

[Agenda for Council on Monday, 24th September, 2025, 4.00 pm - Fenland District Council](#)

Please also see [Audit & Risk Management Committee meeting – 24.11.25](#)

Comply with data protection and General Data Protection Regulation requirements (Cllr Boden)

There have been no reportable breaches of the UK GDPR during the period to which this

briefing relates. However there has been 4 recorded breaches by Housing (1), My Fenland (2) and ARP (1) requiring no further action. The breaches were human error that resulted in information being sent to or shared with the wrong person(s).

In the same period, there have been 4 data subject access requests.

Communication and Engagement

News update:

The number of news stories added to the FDC website and distributed as press releases to local media were 8 in August, 9 in September and 10 in October. We also created an additional 7 news articles we published on our website. Links to all news articles: [News and Events - Fenland District Council](#)

All press releases are distributed to relevant press and media organisations, appear as a web article on the news pages of the [Fenland District Council website](#) and on our social media channels [Facebook](#) and [X](#). We also publicise relevant press releases on our LinkedIn.

Social Media Update:

	X	Facebook	LinkedIn
August	95	88	41
September	110	102	48
October	89	82	41

Consultation Update:

Manor Leisure Centre – 1 September to 28 September 2025.

Draft Statement of Licensing Policy – 15 September to 26 October 2025.

Asset Management and Commercialisation

Ensure our asset base is sustainable, suitable and fully utilised to maximise income opportunities and financial efficiencies (Cllr Imafidon) – MG

Please see updates on [economic growth](#) and the [CPCA growth plan](#) earlier in the report.

Continue with our Commercial Investment Strategy to make informed decisions about the purchase and management of property assets through Fenland Future Limited (Cllr Boden, Cllr Count, Cllr Tierney & Cllr Imafidon)

Please see Cabinet report 15.09.25 - [Investment Board Update and Review of the Commercial and Investment Strategy](#)

Transformation and Efficiency

Local Government Reorganisation (Cllr Boden)

Website link: [Submitted options for reorganisation](#)

Council Agenda item 07.11.25: Local Government Reorganisation – Submission to Government

[Agenda for Council on Friday, 7th November, 2025, 4.00 pm - Fenland District Council](#)

Cabinet agenda item 07.11.25: Local Government Reorganisation – Submission to Government

[Agenda for Cabinet on Friday, 7th November, 2025, 5.15 pm - Fenland District Council](#)

Recent press releases:

[Fenland Cabinet members call on Government to halt Local Government Reorganisation process - Fenland District Council](#)

[Council leaders thank communities for helping shape the future of local government - Fenland District Council](#)

Enforcement & Compliance

Use a fair and proportionate approach to improve living, working and environmental standards as set out in our Enforcement Policies (Cllr French (CPE), Cllr Laws (Planning), Cllr Tierney (Streetscene), Cllr Christy (Environmental Health, Housing & Licensing Enforcement) & Cllr Seaton (Dilapidated Buildings & Enforcement))

Updates are included earlier in the report.

Support businesses to ensure compliance with a wide range of regulatory requirements (Cllr Count & Cllr Imafidon)

In October the council submitted a 6 monthly return to the food standards agency reporting on progress with the approved food safety inspection plan for 2025-2026. The report concluded 267 interventions were planned for April to September and were completed slightly late by the end of October.

Resourcing continues to be a challenge to the service with a full-time vacancy remaining. No suitable applications were received following a 2-month recruitment opportunity.

Health & Safety

Maintain effective Health and Safety systems to comply with relevant legislation and local requirements (Cllr Boden)

Website link: [Health and Safety - Fenland District Council](#)

Deliver all aspects of the Council's Health and Safety action plan to ensure the safety and wellbeing of our workforce, partners and wider community (Cllr Boden)

Website link: [Health and Safety - Fenland District Council](#)

Cambridgeshire & Peterborough Combined Authority (CPCA) update (Cllr Chris Boden)

CPCA website - [Cambridgeshire & Peterborough Combined Authority](#)

Meeting details - [Browse Meetings, 2000](#)

Office decision notices and Mayoral decision notices can be found [here](#).

Key PIs:

Key PI	Description	Target 2025/26	Cumulative Target	Cumulative Performance	Variance (RAG)
PRC1	% of customer queries processed at the first point of contact	92.45%	85%	87%	
PRC2	% of customers satisfied with our service (measured annually in February)	96.66%	90%	N/A (Feb 2026)	
PRC3	% of contact centre calls handled	87.42%	80%	82%	
PRC4	% of businesses who said they were supported and treated fairly	100%	96%	100%	
ARP3	In year % of Council Tax collected	99.67%	96.20%	64.21%	
ARP4	Council Tax net collection fund receipts	£73,350,882	£78,224,486	£50,903,635	
ARP5	In year % of NNDR collected	95.70%	96.46%	64.58%	
ARP6	NNDR net collection fund receipts	£29,467,704	£30,701,571	£21,117,167	
HR2	% of staff that feel proud to work for FDC	86%	85%	N/A (Mar 2026)	

Key:	
	Within 5% of target
	5-10% below target
	10% or more below target

Comments